

## Alpha Tubulin Monoclonal antibody

**Cat:**B31015T

**Company:** HaoKeBio

**Uniprot ID:**P68363

**Applications:** IHC:1:100-1:500

**Organism:**Mouse

IHC-Polymer:1:400-1:2000

**Species reactivity:**Human Mouse Rat

IHC-TSA:1:500-1:2500

**Molecular Weight Calculation:** 50 kDa

WB:1:10000-1:50000

**Observed Molecular Weight:** 50-55 kDa

IP:1ug for 1mg of total protein lysate

FC:1:50-1:250

### Background:

There are five tubulins in human cells: alpha, beta, gamma, delta, and epsilon. Tubulins are conserved across species. They form heterodimers, which multimerize to form a microtubule filament. An alpha and beta tubulin heterodimer is the basic structural unit of microtubules. The heterodimer does not come apart once formed. The alpha and beta tubulins, which are each about 55 kDa MW, are homologous but not identical. Alpha tubulin is useful for scientists across fields as an internal control due to its high, ubiquitous expression pattern.

### Protein full name:

tubulin, alpha 1b

### Synonyms:

TUBA1B, Tubulin alpha 1B chain, Tubulin alpha, EC:3.6.5.-, Alpha-tubulin ubiquitous

### Immunogen:

Recombinant protein

### Isotype:

IgG2b

### Purity:

Affinity purification

### Form:

Liquid

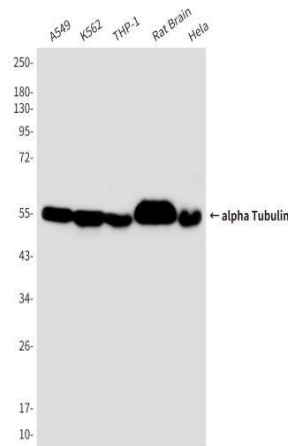
### Storage Buffer:

PBS with 0.02% sodium azide, 100 µg/ml BSA and 50% glycerol.

### Storage:

Store at -20 °C for one year.

### Images:



Dilution of 1:50000 incubated at room temperature for 1.5 hours.

### Source of Reagents:

发表[中文论文]请标注:Alpha Tubulin(B31015T)由杭州浩克生物技术有限公司提供;

发表[英文论文]请标注:Tubulin(B31015T) were kindly provided by Hangzhou Haoke Biotechnology Co., Ltd.